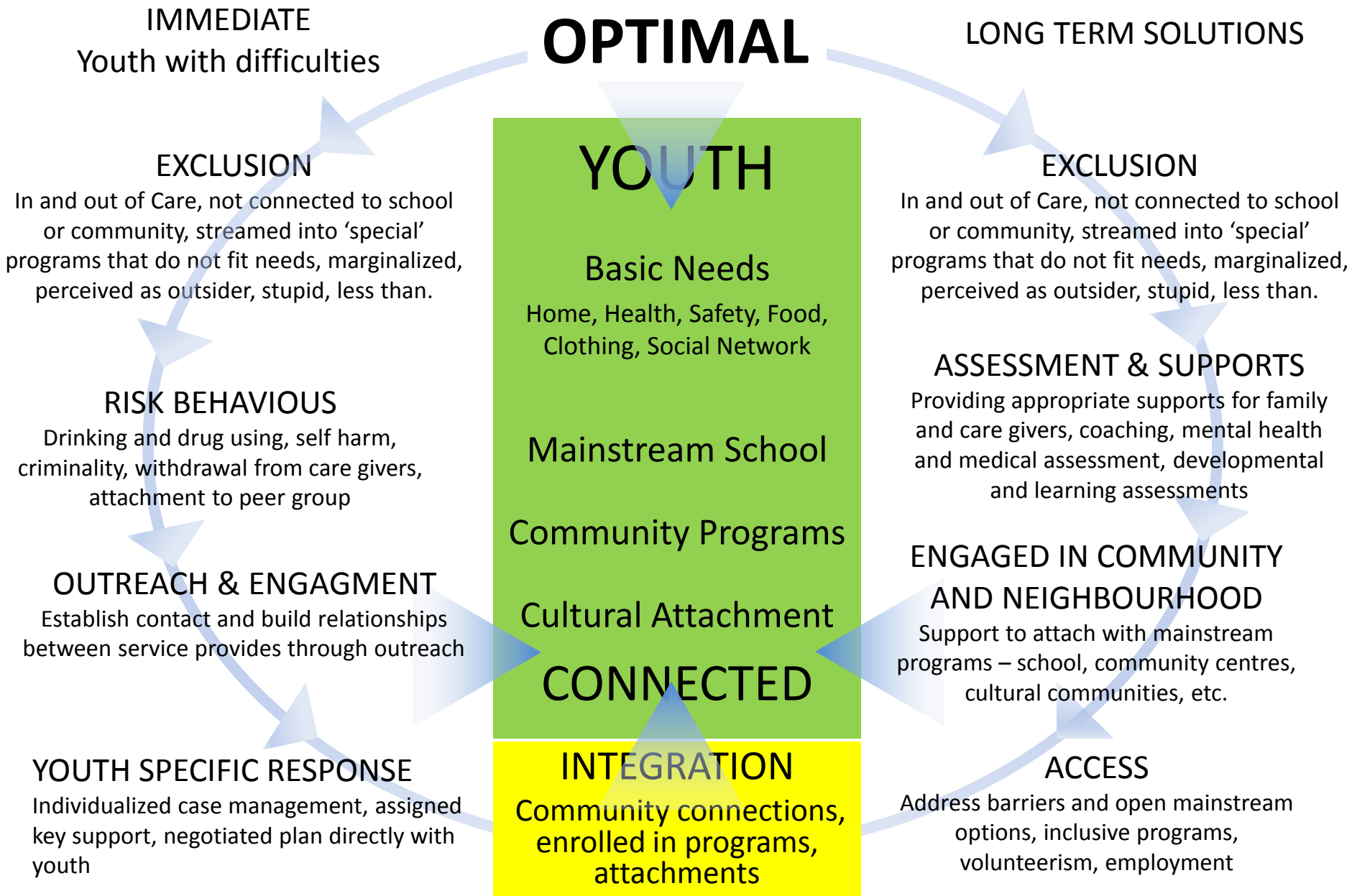


# PLACE BASED RESPONSES

## OPTIMAL



# PLACE BASED RESPONSES

## PRINCIPLES

Inclusion

Child/Youth Centered

Accountability to  
Child/Youth

Responsive - Continuity of  
Relationship

Responsive - Timely and  
Consistent

Integrated Systems as  
experienced by the  
Child/Youth

Builds the Capacity of the  
Children and Family

Supports the Rights of the  
Child/Youth

## RE-ALIGN POLICIES AND PRACTICE TO REFLECT REALITIES OF YOUTH AND PLACE

### NOT COMPROMISED BY CURRENT POLICIES OR PRACTICE

Some examples of current challenges:

- M-F 8:30 am -4:30 pm Service Provision Model- resources not available when needed by youth in crisis.
- Confidentiality concerns – coordination - youth lost in silos ...or just lost due to gaps in information sharing
- Safe House policy-many vulnerable youth do not have access
- Conditioned responses to first exclude, or stream children/youth presenting with difficulties into a separate group(s) away from mainstream (school, recreation, arts, community programs)
- Current public recreation /community program delivery barriers to inclusion – cost, capacity to accommodate and embrace differences
- A set of systems that works from deficits of individuals- not their strengths – FOCUS ON WHAT THEY CAN DO
- Use of single program response to address complex problems that require comprehensive solutions-often with multiple strategies/programs.